

50 

THE
GUILFORD
FOUNDATION
50 YEARS *and still rising!*

IMPACT REPORT
2025





"My mother and I agreed it was a shame that so many of the stately trees on the town Green that had been killed due to storms or disease were never replaced. I went to the selectman, who suggested that I form a group to try and do something about it, so I did".

Betty Stevens, Founder
The Guilford Foundation
1975

Photo: Steve DePino Photography

Dear Treasured Friend,

Fifty years offer a powerful moment to look back, and to look ahead. In 1975, The Guilford Foundation (TGF) began with a focused mission and a small group of dedicated community members. Over time, that mission evolved, expanding to meet emerging needs, helping seed and strengthen vital local organizations, and ultimately sharpening its focus on enriching the quality of life in Guilford. What has remained constant is the generosity of this community and the extraordinary volunteers who have guided and supported this work.

Our anniversary year reminded us of the significance of this lasting impact.

- In 2025, our endowment surpassed \$9 million, up from \$2 million just ten years ago. These donations create a permanent source of funding that gives back to Guilford not just today, but forever.
- Our valued partner, Ascend Bank, gifted a permanent home for the Foundation at 44 Boston Street.
- A group of generous donors raised more than \$230,000 to renovate the space and launch our 50th Anniversary Community Campaign.
- We set a goal of raising \$500,000 in our milestone appeal and nearly doubled it with contributions exceeding \$960,000.

While the 50th Anniversary was a year-long celebration, the Foundation's daily work continued with focus and momentum. We expanded the number of charitable and memorial funds, establishing nine new funds this year alone for donors who want to create lasting legacies. Our competitive grantmaking drew a record high of 59 applications, underscoring the needs within our town. Community investment surpassed \$420,000 through annual grants, sponsorships in partnership with Ascend Bank, Youth Advisory Group grants, donor-advised fund grants, designated charitable fund grants, and scholarships.

In addition to grantmaking, we stepped into meaningful leadership roles, partnering with nonprofit and community leaders to host workshops on economic hardship, workplace culture, and affordable housing, along with helping convene efforts around addressing those experiencing homelessness along the Shoreline.

Perhaps most importantly, this landmark year expanded our reach and deepened awareness of TGF's role in the community. That visibility and the trust behind it position us for an even stronger future.

For five decades, The Guilford Foundation has connected generosity with opportunity. The seeds planted in 1975 have grown into an enduring source of community strength. Because of you, the next 50 years will bring continued collaboration, thoughtful leadership, and meaningful investment in the people and places that make Guilford extraordinary.

Gratefully,

Liza Janssen Petra, Executive Director

Chris Hodgson, Board Chair



DONOR STORY

Building the Next 50 Years

Andy Eder and a group of generous donors spearheaded the building renovation.

Anthropologist Margaret Mead is often credited with the quote, “Never doubt that a small group of thoughtful, committed citizens can change the world. Indeed, it is the only thing that ever has.”

Mead’s research took her around the globe during the twentieth century, but she just as easily could have been speaking about a group of eleven thoughtful and committed supporters of The Guilford Foundation who quietly came together in December 2024 to ensure that it has a lasting home for the next 50 years and beyond.

Andy Eder doesn’t seek the spotlight, but he did, in fact, host a “small gathering” to discuss the property

donated by Ascend Bank (formerly GSB) and the need to update and adapt the building at 44 Boston Street.

“It can be difficult to raise money for capital improvements when helping the community is the priority,” Eder explains, “but we recognized the need to revitalize the building to meet the expanding demands of the Foundation, and to do it quickly.”

“We first reached out to Joan and Barry Richter and together hatched a plan to gather a dedicated group of donors who have supported TGF for years, knowing they would understand and embrace the need to renovate the building,” Eder recalls.

David Jaffe gave the first donation of \$50,000. Within 48 hours, the gathering secured the \$230,000 needed to renovate the building and expand the Foundation’s office and meeting space.

“What was amazing to me,” Eder adds, “was the feeling in that room – something I can hardly describe. These were Guilford people who truly care about Guilford and the Foundation’s role in the community. They recognize that we’re all in this together, which is what I love most about this town.”

The timing proved ideal. As TGF prepared to launch its 50th Anniversary Community Campaign in July 2025 with a goal of raising \$500,000 to honor five decades of impact and ensure a strong future, the renovation funding provided both momentum and confidence. The upgraded space allowed staff to fully utilize the building during this milestone year of celebration and growth.

“Ascend Bank’s extraordinary gift of 44 Boston Street, combined with the generosity of these 11 donors, gave our Board and staff tremendous confidence as we entered our 50th anniversary year,” said Liza Janssen Petra, Executive Director of The Guilford Foundation. “It wasn’t just an investment in a building; it was an investment in our capacity to serve this community well into the future.”



TGF gives special honor and recognition to the donors who made the 44 Boston Street renovation possible:

Ascend Bank
 Mary Stevens & Jock Akin
 Eileen & Andrew Eder
 Kristen & Johan Eveland
 Bob Jaeger
 David & Amy Jaffe
 Delaney & Bruce Lundberg
 Martha & Terry Maguire
 Roslyn & Jerry Meyer
 Joan & Barry Richter
 Pamela & Sandy Stoddard
 Town of Guilford



Photo: TGF staff stand in front of the newly renovated office.

50 Years of Community Impact

For 50 years, The Guilford Foundation has connected generosity with opportunity, supporting projects and programs that strengthen the fabric of our community. From early beautification efforts on the Guilford Green to initiatives that preserve local history, support vulnerable residents, expand the arts, and respond to urgent needs like the COVID-19 pandemic, TGF's grants reflect the evolving priorities of Guilford. The examples that follow, two grants from each decade, illustrate the breadth of causes the Foundation has championed and the lasting impact of investing in our town.

1975: TGF Founders Tree Planting

Betty Stevens, lamenting the loss of so many trees to storms and disease, gathered friends and neighbors to revitalize the Green. Ascend Bank was the first supporter, promising \$300 and three trees to the effort. A total of 16 pear trees were planted in the fall of 1975. TGF continues this legacy through annual grants from the Elizabeth Stevens Tree Fund.



1995: Dudley Farm Education Program

With a \$10,000 grant from TGF, two Guilford High School teachers launched an immersive on-site course at Dudley Farm, bringing students to the North Guilford property each day to explore 19th-century agricultural life, local history, and the Dudley family legacy. Built in 1845, the farm remains an important historical and educational resource for the community.



1985: Guilford Preservation Alliance (GPA) Master Plan

TGF provided seed funding to GPA in 1980 and gave a \$3,500 grant to update the Master Plan for Preservation and Scenic Conservation. The plan established guidelines to protect Guilford's historical, natural, and cultural resources and continues to guide preservation efforts today.



1996: Grass Island Shack Restoration

This beloved Guilford landmark, built in 1930, had fallen into disrepair when TGF partnered with the Guilford Boat Owners Association to launch the Save Our Shack (S.O.S.) campaign. The effort raised \$10,000 to restore the structure and established a dedicated fund with TGF for its upkeep. The Foundation helped raise money again in 2017 and 2024, ensuring this iconic shoreline structure is preserved for generations.



2001: Domestic Violence Services (DVS) Counselor

TGF supported DVS of Greater New Haven in providing a free and confidential counselor in Guilford for women experiencing or fearing abuse. This grant expanded on prior TGF-supported initiatives that helped establish a safe haven for women and children (1981) and the launch of the Women & Family Life Center (1990).



Photo: Ben Kuropat

2011: Guilford Affordable Housing Initiative

Building on earlier efforts to support housing for low- and moderate-income families, TGF funded a 2011 study on affordable housing in Guilford. The study sparked important community conversations and ultimately led to the creation of the Guilford Affordable Housing Commission, which works to promote awareness and collaborate with town leaders to expand housing opportunities.

2023: Orchard House Music Program

TGF expanded the music therapy program at Orchard House, a medically supervised day program for older adults. Weekly performances by local musicians bring music, movement, and shared memories to participants, creating joyful moments of connection and engagement. Grants over the years have supported an art program, gardening, and robotic pet therapy.



2007: Guilford Interfaith Volunteers (GIV) Charlie's Closet

Charlie's Closet began as a small lending program that provided gently used medical equipment, such as walkers, wheelchairs, and canes, to community members in need. As the program grew, TGF supported the construction of a storage barn to house the expanding inventory and, years later, helped fund the winterizing of a breezeway to better support volunteers and operations.



2020: COVID-19 Response Fund

In the early days of the pandemic, TGF partnered with the Women and Family Life Center to quickly launch the COVID-19 Response Fund to support residents and nonprofits facing sudden hardship. What began as a goal to raise \$20,000 grew to nearly \$140,000, providing critical relief to healthcare workers, local families, and more than 20 struggling nonprofits.



2024: Sound Life Connections Mobile Gelato Truck

Founded by special education professionals, Sound Life Connections supports young adults with special needs after high school through vocational and life-skills programming. TGF helped fund The WAVE mobile gelato truck to provide hands-on job training and build social and communication skills. The following year, TGF continued its support with a grant for the in-town gelato café that creates an inclusive space for community connection and employment opportunities.



Milestones, moments, and generosity marked TGF's 50th anniversary.

The golden anniversary celebration began early with the unprecedented gift of a building just as 2024 came to a close. Ascend Bank provided TGF with office space at 44 Boston Street for two decades. In recalibrating its own space needs, Ascend offered the building to TGF, creating both an opportunity and a challenge for the Foundation on the threshold of its 50th anniversary. An opportunity because the gift provides TGF a bedrock for the future. A challenge because the historic house needed some work.

Behind the scenes, Executive Director Liza Petra and longtime supporter Andy Eder gathered a few steadfast supporters who collectively committed to funding over \$230,000 worth of renovations to the historic house near the center of the Guilford Town Green. Their quick action allowed TGF to move in and focus on the milestone year's celebrations and goals in a more effective space.

Not surprisingly, the mood was festive at The Marketplace in March when board members, staff, donors, and recipients gathered to kick off the year with a history lesson and a challenge. Recalling the seven visionaries who set out in 1975 to improve the quality of life in Guilford with \$300 and three trees, the opening celebration also looked to the future, aiming to raise \$500,000 to honor 50 years.

Throughout the year, TGF continued to engage the community to support its mission. News articles about outgoing Board Chair Alex Sulpasso and incoming Board Chair Christopher Hodgson, as well as letters to the editor in the local media, reminded residents of the powerful impact of connecting generous donors with worthy causes.

September brought a whimsical reminder of TGF's mission to improve the Green when The Guilford Penguin Project's installation, dubbed "Bearly Autumn," revealed a collection of cutout bears that inspired smiles and selfies. TGF became the beneficiary when the bears were auctioned off at the end of the exhibit.

Dozens of supporters gathered in November for the 50 & Forward celebration at the Guilford Yacht Club, an evening of local food with gelato from The WAVE, lively conversation, and memorable performances by the Guilford High School Voices, Julie Fitzpatrick, Stephanie Little Brown, and Russell Kleiner with his quartet.

to honor the 50th anniversary of the Foundation's first tree planting.

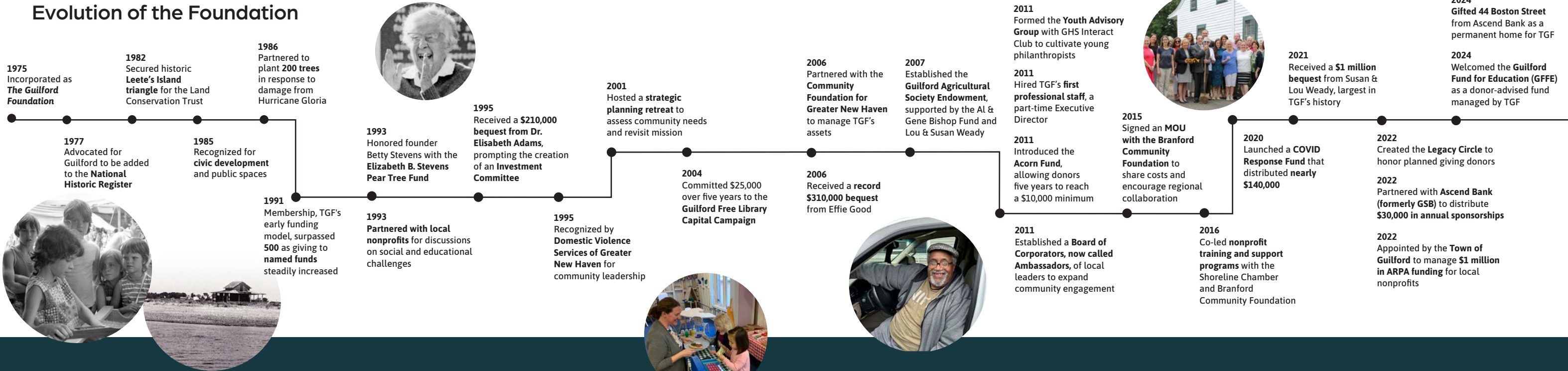
As the sun set on the anniversary year, TGF exceeded its initial fundraising goal, raising more than \$960,000 to help ensure another 50 years and beyond of making a positive impact on the Guilford community.

The following day, a tree was installed on the Green



Photos: The TGF community in 2025, coming together to celebrate 50 years of impact and generosity.

Evolution of the Foundation



Leadership & Legacy

In 1975, a group of forward-looking neighbors led by Elizabeth "Betty" Stevens established the Guilford Foundation to preserve the beauty of our town green by planting trees. Their advocacy expanded to include many diverse causes that truly enrich the quality of life in our remarkable town.

A special thanks to those who founded TGF:

- Larry Appleton
- David Dudley
- Hugh Jones
- John Leffngwell
- Stanley Page
- Betty Stevens
- Tom Wuerth



The Leaders Who Helped Guilford Grow

We thank the past presidents (1975-2016) and board chairs (2017-2026) whose leadership guided The Guilford Foundation for 50 years. Supported by generations of dedicated board members, they together created a lasting legacy of community impact.

- | | | |
|-------------------------------------|-------------------------------|-------------------------------|
| 1975-1976 Elizabeth "Betty" Stevens | 1999-2001 Suzanne Lee | 2015-2017 James Mancini |
| 1976-1980 Hugh McK. Jones | 2001-2003 Charles A. O'Malley | 2017-2019 Kyle Eagleson |
| 1980-1984 Virgil W. McDaniel | 2003-2005 Jean M. Handley | 2019-2022 Peter Barrett |
| 1984-1988 John T. Dillon | 2005-2007 William "Bo" Huhn | 2022-2024 Linda Weber |
| 1988-1990 Ann D. Erda | 2007-2009 Norma Ginz | 2024-2025 Alexander Sulpasso |
| 1990-1993 David D. Dudley | 2009-2011 Timothy P. Geelan | 2025-2026 Christopher Hodgson |
| 1993-1997 John T. Dillon | 2011-2013 John J. Crawford | |
| 1997-1999 Frank J. Ifkovic, Jr. | 2013-2015 Tom Pinchbeck | |

50 Years and Still Rising

Over five decades, The Guilford Foundation has grown in scope, resources, and reach—strengthening our community and positioning us for the future.

| | 1975 | 1985 | 1995 | 2005 | 2015 | 2025 |
|--------------|---------|----------|-----------|-----------|-------------|-------------|
| Asset Growth | \$8,500 | \$44,000 | \$458,000 | \$730,000 | \$2,000,000 | \$8,545,000 |
| Grant Growth | \$3,000 | \$19,000 | \$30,000 | \$18,000 | \$74,000 | \$420,000 |
| Fund Growth | 1 | 6 | 11 | 15 | 33 | 87 |

Early Investments Grow into Lasting Results

Over the years, we have helped plant the seeds for many organizations and initiatives that continue to serve our community today.

- | | | |
|--|---|--|
| Guilford-Madison Service Bureau (1977) | Women & Family Life Center (1990) | Schiller Shoreline Institute for Lifelong Learning (2008) |
| Guilford Center for Children after-school program (1978) | Guilford Food Bank (1994) | Guilford Performing Arts Festival-GreenStage Guilford (2017) |
| Shoreline Arts Alliance (1980) | Guilford Youth Mentoring (2000) | Guilford Witness Stones Project (2018) |
| Guilford Preservation Alliance (1980) | Guilford Youth & Family Services Community Resource Center (2002) | Sound Life Connections and The WAVE (2024) |
| Baldwin Middle School Outdoor Education Center (1981) | Guilford Fund for Education (2006) | Little Sprouts Learning Center (2025) |
| Guilford Interfaith Volunteers Meals on Wheels (1986) | Guilford DAY Developmental Assets for Youth (2007) | |

Voices from The Guilford Foundation



“As President, it became clear that to serve as Guilford’s hub for philanthropy and address community needs in meaningful, lasting ways, we needed to grow.”

*Timothy P. Geelan,
TGF Ambassador &
Former President*

“When I was invited to become a co-signer, I was president of the Guilford Jaycees. At the time, I had no idea it would grow into the strong organization it is today. I couldn’t be prouder.”

Larry Appleton, Founder



“Since 1975, our partnership with TGF has reflected a shared commitment to Guilford’s future. From leadership and annual sponsorship support to a permanent charitable fund and the gift of 44 Boston Street, we’re proud to stand beside an organization that keeps us deeply connected to the community we serve.”

*Shalonta Ford,
SVP, Director of Community
Engagement, Ascend Bank*



“It is impressive that the Town of Guilford trusted the Foundation to distribute the American Rescue Plan Act funds because of its deep knowledge, proven reputation, and rigorous process. Distributing \$1 million to local non-profits has a significant impact.”

Roger Joyce, TGF Ambassador & Former Board Treasurer

“COVID presented the foundation with an opportunity to pivot, raising money to disburse for immediate financial relief. Within 6 months, the community donated nearly \$140,000 to the COVID-19 Response Fund, helping many families and nonprofits that struggled to operate.”

Linda Weber, TGF Ambassador & Former Board Chair

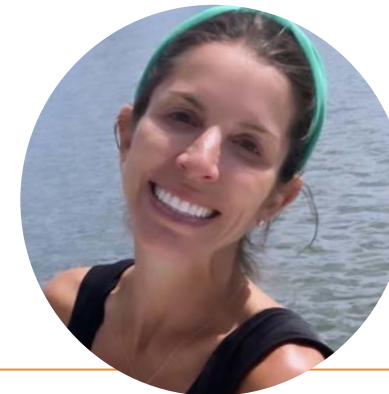


“I love the phrase ‘charity starts at home.’ The Foundation’s named charitable funds comprise the endowment. Year-over-year, the principal is invested and grows, ensuring that local nonprofits are supported forever.”

*James Mancini, TGF Ambassador
& Former Board Chair*

“The real success and beauty of the Foundation’s work is in the small day-to-day magic that happens through our grantmaking and sponsorships.”

*Maggie Moffet,
TGF Board Member*



“TGF helped us get our start in the community in 1978 and has been supporting us ever since. A part of their current support provides scholarships for Guilford families.”

*Annemarie Holly,
Executive Director,
Guilford Center for Children*



“Whether it’s providing emergency funding to bring the GHS Snack bar to code or keeping an early education program in North Guilford after an unexpected shutdown, TGF is always ready to respond and help the community.”

*Matt Hoey, First Selectman,
Town of Guilford*

“The foundation gave us \$20,000 in 2017, at the start of our organization’s formation. It was an important gesture of faith and belief in what we could do. I can honestly say, we wouldn’t exist without TGF.”

Peter Hawes, Executive Director, GreenStage Guilford



“The Foundation’s impact shows up in many ways. Effie Good was a lifelong Guilford resident who led a quiet and simple life. Upon her death in 2007, she made the foundation’s largest donation at the time, believing in TGF’s work and the impact of local philanthropy.”

Betsy Gribble, TGF Ambassador & Former Board Member



GRANT AWARDS

In 2025, The Guilford Foundation (TGF) invested \$421,027 in the community through its competitive grantmaking, sponsorships in partnership with Ascend Bank, Youth Advisory Group grants, donor-advised fund grants, designated charitable fund grants, and scholarships.

\$121,100 Annual Competitive Grant Awards

Arts, Culture & Heritage

- \$3,500 Guilford Art Center to support general operating expenses.
- \$4,000 Guilford Performing Arts Festival, Inc. to support the GreenStage Guilford Festival.
- \$1,500 Neighborhood Music School to support Making Music with Mentors.
- \$1,000 Starship Dance Theater & Company to support general operating expenses.
- \$1,500 Guilford Keeping Society to support repairs to the Thomas Griswold House Museum.

Basic Needs

- \$3,000 Community Dining Room, Inc. to offset operating costs and food costs.
- \$4,900 Guilford Affordable Housing Commission to support public outreach and engagement.
- \$5,000 Guilford Social Services to support the holiday meal baskets for families experiencing financial hardships.

Children and Youth

- \$2,000 Traveling Toys, Inc. to support the expansion of the Toy Lending Library for Children and Teens at the Guilford Free Library.
- \$2,300 Guilford Youth Mentoring to support general operating expenses and an awareness building campaign.
- \$2,500 Camp Hazen YMCA to provide financial assistance to Guilford campers.
- \$2,500 Guilford Social Services to support the Back-to-School Program, which provides Guilford children with funds for school supplies.
- \$2,500 American Legion Darrow-Rebuzini Post 48 to support youth programs through Guilford Public Schools.
- \$3,500 Baldwin Middle School PTO to support the Baldwin Playground Project.

Civic Engagement

- \$1,500 Guilford Community Television to support general operating expenses.

Education

- \$2,500 Community Nursery School to support a new school building.
- \$4,600 Guilford Center for Children Before and After School Care Program, to provide tuition assistance for Guilford families.
- \$5,000 Guilford A Better Chance to support general operating expenses.
- \$7,500 Guilford Center for Children Early Education Program, to provide tuition assistance for Guilford families.
- \$8,000 Little Sprouts Learning Center to support general operating expenses.

Environment

- \$2,500 Guilford Garden Club to support the planting of trees in Guilford.
- \$3,000 Connecticut Forest and Park Association to support the Menunkatuck Pathways Preservation Initiative.
- \$3,200 Save the Sound to support shoreline restoration at Chittenden Park.

Human Services

- \$1,500 SYD'S Book Shack & Boutique to support general operating expenses.
- \$2,500 SARAH Foundation to support Gavin and Friends general operating expenses.
- \$2,800 The Connecticut Hospice, Inc. to purchase Visiting Nurse carry bags for home visits in Guilford.
- \$4,000 Special Olympics Connecticut to support the athletes and volunteers of the Central Shoreline local program.
- \$5,000 APK Charities Corporation to support the APK Charities & Guilford Social Services Veteran Direct Assistance Program.
- \$7,500 Women & Family Life Center to support the Guided Assistance Program (GAP).

Seniors

- \$1,300 Orchard House Medical Adult Day Center to support a Robotic Pet Therapy for Dementia program.

- \$2,500 Shoreline Village CT to support general operating expenses.
- \$4,000 Guilford Housing Authority to support accessibility through the installation of Handicap Ramps.

Wellness & Mental Health

- \$1,500 Soundview Family YMCA to support the Livestrong at the Y Program.
- \$1,500 Soundview Family YMCA to support the Parkinson's Wellness Program.
- \$4,500 The Cove Center for Grieving Children to provide support services for grieving children.
- \$5,000 Clifford W. Beers Guidance Clinic, Inc. for clinical services, case management and care coordination for Guilford children and youth.

\$13,200 Youth Advisory Group Grants

to ALEX, Inc, Before and After School Care Program, GCC, Community Dining Room, Inc., Guilford Center for Children, Guilford High School Multicultural Festival, Guilford Keeping Society, Guilford Social Services, SARAH Foundation Gavin and Friends, Pilgrim Fellowship

\$16,495 Youth Advisory Group Guilford Institute Grants

supporting the following Guilford High School programs and initiatives: new Swim and Dive Board at Soundview YMCA, Guilford Rowing equipment, Ethics Bowl registration and GHS Concession Stand renovation.

\$32,000 Donor Advised Grants

to support Stand Up Speak Out, the Trisha Brown Dance Company, Community Nursery School Capital Campaign, Guilford Community Garden and Sound Life Connections: The WAVE.

\$37,916 Guilford Fund for Education Grants

to support programs in the Guilford Public Schools.

\$62,670 Designated Grants

supporting the following organizations: Guilford A Better Chance, Guilford Agricultural Society, Guilford Art Center, Guilford Community Fund, Guilford Free Library, Guilford Interfaith Volunteers, Guilford Preservation Alliance, Guilford Social Services, The Guilford Foundation, Shoreline Village CT, St. George Church Food Pantry, Women & Family Life Center.

\$106,400 Scholarship Awards to 39 graduates from Guilford High School and 2 graduates from the Sound School.

\$30,470 Sponsorship Awards

to 27

- organizations:
- ALEX, Inc
 - Community Nursery School
 - Guilford Art Center
 - Guilford Interfaith Volunteers
 - Guilford Keeping Society
 - Guilford Performing Arts Festival, Inc.
 - Guilford Youth Mentoring
 - Indaba Action Team
 - Knights of Columbus Council #3928
 - Legacy Theatre
 - North Guilford Congregational Church
 - Parks and Recreation, Town of Guilford
 - Paul Dostie KARE Foundation
 - Project Graduation
 - Rotary Club of Guilford
 - SARAH Foundation
 - Shoreline Arts Alliance
 - Sound Life Connections Inc
 - Soundview Family YMCA
 - St George Men's Group
 - The Connecticut Hospice, Inc.
 - The Dorothy Whitfield Historical Society
 - The Dudley Foundation/The Dudley Farm Museum
 - The Ethan Miller Song Foundation
 - The Guilford Fair Parade
 - Theater Arts Parents Support (TAPS)
 - Women & Family Life Center



FINANCIAL OVERVIEW

Financial Highlights

Fiscal Year (FY) 2025

The Guilford Foundation is pleased to share our financial highlights for Fiscal Year (FY) 2025. This past year was marked by extraordinary generosity. Gifts, grants, and new funds reached record levels as our community came together to celebrate TGF’s 50th anniversary and the impact it has made in Guilford. None of this happens without you, our donors, partners, grantees, and volunteers, and we are deeply grateful for the journey we share.

Putting Resources to Work

In FY 2025, TGF awarded **\$421,027 in grants and sponsorships**, the most distributed from our own endowment in the Foundation’s history.* These grants support nonprofits doing vital work across education, human services, the arts, conservation, and more. Sponsorships, made through our partnership with Ascend Bank, help ensure that community events and programs remain accessible and vibrant. Whether it’s a scholarship that opens a door or a grant that helps a local organization expand its reach, we are proud to see these dollars at work in our community.

The Generosity of Our Donors

2025 was a remarkable year. Total contributions received in FY 2025 reached **\$673,003**, reflecting ongoing support from individuals, families, nonprofits, and corporate partners who trust TGF to steward their gifts thoughtfully and effectively. This figure

does not include the early gifts received at the end of 2024 to renovate our new home at **44 Boston Street**. Including those contributions, gifts related to our 50th anniversary totaled **\$940,312**, an extraordinary show of community support for this milestone year.

A Strong and Steady Portfolio

As of December 31, 2025, total assets stand at **\$9,075,636**, a new high-water mark for TGF, reflecting both the growth of our endowment and the addition of our building in 2024. Our endowment is managed by professionals at the Community Foundation for Greater New Haven and invested in a globally diversified portfolio of stocks, bonds, alternative investments, and private assets. Guided by our Finance Committee, we remain focused on long-term stewardship, ensuring the Foundation continues to serve Guilford for generations to come. While markets naturally rise and fall, we remain confident in our strategy and partners, and are committed to steady, thoughtful growth.

Your generosity, engagement, and support are the backbone of our shared success. We deeply value the trust you place in the Foundation.

**Our overall distributions into the Guilford community were only higher during 2023 & 2024 when we were asked by the Town of Guilford to distribute American Rescue Act Funding totaling \$1M over the two years.*

2026 BOARD OF DIRECTORS

Chris Hodgson, *Chair*
 John Hyman, *Vice Chair*
 Kristin Vander Wiede, *Treasurer*
 Ashley Fernandez, *Secretary*
 Sarah Blanton
 Stephanie Little Brown
 Wesley Cain
 Kristopher Cricchi

Linda Fan
 Stephen J. Hegedus
 Judith Meyers
 Maggie Moffett
 Julie Paquette
 NiCole Schlagheck
 Nathan Scoggin
 Stacy Errante Votto



AMBASSADORS

Barbara Angle
 Peter Barrett
 Jeffrey Beatty
 Sarah Bishop DellaVentura
 Maryann Bracken
 David Davison
 Connie Dickinson
 Kyle Eagleson
 Andrew Eder
 Pamela Ellman
 Christine Fappiano
 Tony Fappiano
 Dan Fisher
 Timothy Geelan
 Joe Goldberg
 Betsy Gribble
 Robert Hartmann
 Richard Hersh
 Allen Jacobs
 Roger Joyce
 Mary Jo Kestner

Marc “Chris” Leete Knapp
 Wendy Kravitz
 Kate Lee
 Delaney Lundberg
 James Mancini
 Rick Mayer
 Robert McCoole
 Michael McNiff
 Michael Mikolay
 Matthew Peterson
 Tom Pinchbeck
 Sandra Ruoff
 Meghan Scanlon
 Edward Seibert
 Brendan Smith
 Pam Stoddard
 Alexander Sulpasso
 Jan Walzer
 Linda Weber
 Kathleen White

STAFF

Liza Janssen Petra, *Executive Director*
 Jennifer Mullett, *Program Director*
 Amy Paris, *Administrative Assistant*
 Pam Miller, *Communications Specialist*
 Kelly Hurley, *Bookkeeper*

LEGACY CIRCLE

We’re grateful for these forward-thinking donors who want to secure a strong future for our community through thoughtful philanthropy. The Guilford Foundation’s Legacy Circle allows us to recognize our members’ generosity now with the hope of encouraging others to plan a gift for the future.

Legacy Circle Members

- Mary Stevens & Jock Akin
- Sylvia & Laurence Appleton
- Jane & Charles “Gene” Bishop
- Lawrence Dowler
- Christine & Anthony Fappiano
- Cindy & Joe Goldbert
- Judith Meyers & Richard Hersh
- Merri & John Hyman
- Allen Jacobs
- Connie & Roger Joyce
- Kate & William Lee
- Gwendolyn Gunn & Norman Marshall
- Michele Martin
- Joe Nugent

Through the Legacy Circle, donors demonstrate their long-term commitment to the Foundation’s mission. Members pledge to include TGF in their estate planning. The planned gift may be designated unrestricted or directed to a field of interest or specific charitable organization. The donation provides favorable tax advantages for the estate while helping the Foundation’s important work continue for generations to come.

Join the Legacy Circle by contacting Executive Director Liza Janssen Petra by emailing lpetra@guilfordfoundation.org or by calling (203) 640-4049.

| | FY2025 | FY2024* | FY2023** |
|-------------------------------------|-------------|-------------|-------------|
| Total Assets | \$9,075,636 | \$7,898,934 | \$6,584,711 |
| Total Contributions | \$673,003 | \$650,632 | \$440,236 |
| ARPA Funding Received & Distributed | – | \$500,000 | \$500,000 |
| Grants & Sponsorships | \$421,027 | \$396,739 | \$331,836 |

* FY 2023 reflects the period ending December 31, 2023 (previously, fiscal years ended January 31).

** FY 2024 contributions include the gift of the \$530,000 building from Ascend Bank.

LIST OF DONORS

We extend our deepest gratitude to the following individuals, businesses, and foundations who made financial contributions to The Guilford Foundation from January 1, 2025 to December 31, 2025.

\$10,000 AND UP

Ascend Bank
Nancy & Jonathan Bishop
Eva & Michael Brown
Edith & Howard Brown
DAFgiving360
Lawrence Dowler
Eileen & Andrew Eder
Pamela & Jonathan Ellman
Cindy & Joe Goldberg
Merri & John Hyman
Robert Jaeger
Amy & David Jaffe
Jewish Community Foundation
of Greater Kansas City
Connie & Roger Joyce
Delaney & W. Bruce Lundberg
Market Street Trust Company
Joanna Martin
Judith Meyers & Richard Hersh
Rennie, David & Cristina Negron
Regmark Foundation, Inc.
Joan & Barry Richter
Susan Salice
Jennifer & Nathan Scoggin
Mary Stevens & Jock Akin
Stoddard Family Foundation
Town of Guilford
Vanguard Charitable
Jan Walzer & David Etzel

\$5,000 TO \$9,999

Barbara & Chip Angle
Karen & Terry Bergantino
Debbie & Keith Bishop
Bishop's Orchards
Breakwater Books
Patricia DeChiara &
James Goodridge
Connie & Peter Dickinson
Steven Downing
Jeffrey Feingold
Fidelity Charitable
Jersey Mike's Corporate
Martha & Terry Maguire
Jennifer & Michael McNiff
Roslyn Meyer
Laura Page
Sound Obstetrics & Gynecology

\$2,000 TO \$4,999

Charles Austin
Carol Bailey & Laurie Desmet
Bank of America Charitable
Gift Fund
Nanette Baratta
Barbara Bishop

Layna & Peter Cain
Karen & Robert Davidson
East River Energy, Inc.
Stephen Goldschmidt
Douglas Jaffe
Amy Kaneko
Wendy Kravitz
Kate & William Lee
Charles Magby
Elizabeth & James Mancini
Morgan Stanley Charitable Fund
Park City Music Hall
Elizabeth & Stanton Robison
Sandra Ruoff
Mary Scheimann & Whit Iglehart
Derek M. Steinbacher MD,
DMD, FACS, FRCS
Herbert Swartz
United Way of Greater New
Haven
Kristin & Chris Vander Wiede
Saint George Men's Group

\$1,000 TO \$1,999

Anonymous Donor
Arthur Murray Dance Center
of Guilford
Stuart Baldwin & Matt Casper
Alex & Skippy Banker
Berchem Moses PC
Marna & Eric Borgstrom
Tanya Bovee
Maryann & Michael Bracken
Ursula Brewster & Mark Gahm
Carmody Torrance Sandak &
Hennessey LLP
Community Foundation for
Greater New Haven
Jeanmarie & Colin Cooper
Anne Elsaid
Linda Fan & Preston Sprenkle
Shelli Farhadian &
Michael Chiorazzi
Allison & Josh Geballe
Melissa & Timothy Geelan
Jane & Stephen Gresham
Betsy Gribble & Doug Baldwin
Gwendolyn Gunn
Robin & Marc Hahn
Charles Herrschaft
Kristine & Ray Iglesias
Killingworth Cranberries
Law Offices of Bradley L.
Sorrentino
Law Offices of Charles L. Kurmay
Stephanie Lennon
Carol & Robert Lyons
William Maley

Cindy & Robert McNamara
Elisa & David Milano
Pam & Doug Miller
Maggie Moffett & Tom Ferrell
Palumbo's Automotive Unlimited
Julie Paquette &
Derek Steinbacher
Diane & Guido Petra
Petra Construction Corporation
Solange & Ralph Schipani
Sarah Shrewsbury
Lee & David Shrewsbury
Sightline Wealth Advisors, LLC
Pamela & Bruce Simonds
Sound Generational Wealth
Sandra & Parry Spahr
Stony Hill Ventures
Gregory Teft
United Way of Central &
Northeastern Connecticut
Linda & Jeffrey Weber
Mara & Rich Weissmann
Kathleen White
Yale New Haven Health

\$500 TO \$999

Anonymous Donor
Anonymous Donor
Jean & Peter Barrett
Jane & Clifford Bechtold
David A. Beckerman
Foundation, Inc
Shauvan & Edward Bennett
Pamela & Stephen Besse
Linda & Daniel Brill
Janet Brissette & Albert Kraus
Kathleen & Alan Brooks
Scott Brown
Claudia Buzzi & Pietro DeCamilli
Christina & Wesley Cain
Community Foundation for
Greater New Haven
Jen & John Cruet
Willie Daneault
Mary Lee Duff
Flowers on the Green
Ariadna Forray &
Christopher Sankey
Bonnie Garmisa &
Tom Pinchbeck
Ryan Gavigan
Hanler Building Company
Nathalie & Stephen Hegedus
Caroline Herrick &
Theodore Sands
Marie & Alex Hetherington
Mary Huben
Kaaren Janssen

Liza Janssen & Noel Petra
Katherine & Richard Kahan
Suzanne Kelley
Mary Jo Kestner &
Russ Campaigne
David Knapp
Candace & Donald Kohn
Marie Landry & Peter Aronson
Bradley Lois
Paul Looney
Peter Mancini
Patty Ann & Ed Meyer
Mikolay Jet Group
Edita & Michael Negron
Joe Nugent
Elisabeth & David Ott
Page Hardware & Appliance
Company
John Parese
Deborah & Charlie Peluse
Primary Residential Mortgage,
Inc
Tyler L. Rigg Memorial
Foundation
Holbrook Robinson
Michele & William Rosa
Joseph Ruzzi
Meg Rydell & Harry Aslanian
Karen Scialabba
Judith Stelboum
Patricia Sullivan
Susan & Peter Tattersall
Jennifer & Andrew Tucci
US Charitable Gift Trust
Marianne & Robert Valley
Wendy Walden
Cindy & Jonathan Wallace
Lucy & Brian Weady
Noreen & Charles Wolleben

\$250 TO \$499

Sylvia & Laurence Appleton
Abigail & John Apuzzo
Nancy & Ronald Bailey
Christopher Balestracci
John Barreiros
Patricia Bee
Maureen & Michael Belden
Buckley, Wynne & Parese
Tracy Calafiore
Joann & Richard Carson
Brian Clark
Alison Coleman
Pamela Coleman
Walter Corbiere
Ellen Cordes & Henry Haskell
Stephen Dolan
Joan Downey
Gary Drake

Edward Engberg
Carrie & Lou Federici
Theresa Fiondella
Julie Fitzpatrick-Palumbo
Dorothea Flink
William Fusco
Elaine Gast Fawcett &
Ted Fawcett
Kevin Geagan
Norma Girion
Shirley Gizoni
Garth Greimann
Guilford Fund for Education
Guilford Funeral Home
Elizabeth & Nicholas Hadley
Jane & Thomas Hanson
Lynne & Henry Healy
Brian Healy
Janine & Chris Hodgson
Lynn & Kenneth Horton
Anne & Edward Huguene
Joint Effort Exercise
Noemi & Theodore Kearns
Sarah Kitchell
Marc Krause
Clare & James Landon
Karla Lindquist & Alex Sulpasso
Wanda & Horace Little
Kathy & Gary MacElhiney
Alice & J Thomas Macy
Mathnasium of Guilford
Melanie Barocas & Rick Mayer
Sue & Brian McGlone
Juliette McSweet
Richard Misenti
Myra Moffett & Toby Moffett
Robert Monte
Jennifer & Craig Mullett
Cliff Ocallahan
Phyllis & Ed Olstein
Shaun Paisley &
Douglas Nejaime
Renee Pallenberg
Emily Perillo
Michael Piagentini
Ruth & Anthony Pinto
Mindy Pollack
Karen & Richard Quercia
Renaissance Charitable
Ellen Rosand
Emelinda & Gerard Sanacora
Joan & Ralph Schoemann
Larry Schwartz
Walt Sizemore
Gail & Roy Smith
Robert Stanko
Elsa Stone & Steven Wolfson
Dawn Stopka
Ann Street & Ted Zuse

The Connelly Team at Coldwell
Banker Realty
Carmela Valentino &
Darcy Turner
Van Wilgen's Garden Center
Kim Vigliotti
Pam Welch
Pamela & Buck Wilson
Ann & John Zaaier

\$100 TO \$249

Anne Aghajanian
Allison Alkire &
Roslyn Rubinstein
Amica Insurance Company
Susan & Donald Anderson
Peter Arentzen
William Bailey
Virginia & Charles Baltay
Daniela Balzano
Annette & John Barbetti
Marlene & Joseph Barnes
Audrey Barr
Lauren Barry
Kim Beckett
Mary Berdo
Lacey Bicknell
Mildred Blank
Sarah Blanton
Nona Bloomer
Allison Bohren
Barbara Booth &
Iverson Whisnant
Sheela Brooks
Mairi Bryan
Graham Buckley
Carolyn & Philip Bunick
Susan Burlingame
Jeffrey Burt
Nancy & Robert Cairns
Pievina Calabrese & Maria Pesce
Amy & Anthony Calabrese
Cindy & George Caligan
Marissa Capasso &
Michael Piagentini
Pamela Carley &
Lawrence Zukoff
Helen & David Carlson
Barbara Caruso
Anita Catardi
Jenn & Paul Cavallaro
Arthur Chapman
Robin & Rob Charney
Patricia & Peter Colburn
Russell Collins
Maureen Corcoran &
Zeno Chicarilli
Vincent Costantino
Christine Costantino



Kristopher Cricchi
Michelle Crowley
Annine Crystal
Meghan Cunningham
Laurie Curtin
Shan & Ronald Cyr
Kristen D'Souza
Stacey Daly
Grace Della Ventura
Amy Demarseilles
Celeste & Ronald Denison
John Dillon
Stephanie Donegan Dietz
Chip Dorwin
Sharon & Michael Durham
Susan & Daniel Dwyer
Stacy & Kyle Eagleson
Ellen & Michael Ebert
Lisa Lempel & Elliot Sander
Steven Errante
Stacy Errante & Paul Votto
Gail Etter
Christine & Anthony Fappiano
Kristy Faulkner
Ashley & Salvatore Fernandez
Ann & Daniel Fisher
Elaine & Richard Fitzpatrick
Robert Fleming
Emily Fournier
Marie Fourteau
Bruce Freeman
Bini Jariwala Freeman &
Paul Freeman
Carol & Hod French
Heidi Freund
Moody School
Connie Frontis & Neil Brockwehl
Chris Galvin
Laura & Adam Gilbert
Trevor Giles
Rich Glinka
Anne & Jeffrey Godsey
Karen & Phil Goldberg
Karen Grimmell &
William Joughin
Guilford Garden Club
Guilford Interfaith Volunteers
Mary Gunther
Thomas Haar
Martha & Frederick Haeseler
Peter Halley
Laura Hartmann
Eleanor & Robert Hartmann
Cheryl & Thomas Hirsch
Alexander Hoffman
AnnMarie Holley &
Michael Duggan
Amy Hopkins
Lindsey Houser
Danielle Howard
Jonathan Hryb
Wendy & Frank Ifkovic
Suguru & Avlin Imaeda
Michaele Imbrogno
Parker Jeskey

Eve Karasik
Susan Kashaf &
Christopher Ruser
Clare & James Keefe
Hali Keeler
Patricia Keenan
Nancy Khorsandi
Barbara Kiesel
Laurie & Bruce King
Valerie Kilmartin &
Richard Forest
Judith & Vaughn Knowles
Pam & Gary Knowles
Beverly Kolz
Janet & Joseph Kozakiewicz
Marian & George Krivda
Jason Leckey
Cynthia & Gary LeMay
Forrest Levin
David Littlehale
Nicole Loffredo
Peter Lombardozzi
Elise Low
Lindalea Ludwick
Kathleen MacAndrew
Gayle Maclachlan
Stephanie Mallory &
James Hocking
Josephine Marchetti
Dawn Mattei
Jamie & Tom McCauley
Robert McCool
Joanne McLeod
Joan & Thomas McNeil
Thomas Melillo
Patrice & William Melley
Teresa Mendoza
Mary Jane Minkin &
Steven Pincus
Virginia Moffat
Paul Mohor
Duffy & Eric Mudry
Karen Mueller
MSMP, LLC
Estelle & Paul Nussbaum
Leah O'Connell
Ronnie O'Hara
Marjorie & Charles O'Malley
Stacy Offner & Nancy Abramson
Ann & Stephen Page
Kathy & Joe Pajor
Gail & Michael Pappas
Amy & Timothy Paris
Judith Pasternak
PayPal Giving Fund
Linda & Randy Perham
Whitney & Matt Peterson
Brigitte Peucker & Paul Fry
Chris Pierson
Amanda & Brendon Pluck
Point32Health
Kathleen & Michael Pratt
Susan Renner
Barbara & Roger Richard
Barbara Riley

Rosalie Robinson
Harriet & Ken Rosen
Janice Rosenberg
Barbara & Victor Russo
Nancy Ruther
S.M. Esposito & Co PC
Marcia & Robert Safirstein
Saint George Church
Elliot Sander
Sheri Scully & Jon Rubin
Sheila Shay
Nadine & Steve Shimada
Joan Shrewsbury
Alison Silver Centrilla
Laurel & Terry Slater
Blythe & Kevin Smith
Melissa & Stanford Smith
J. Philip Smyth
Stephanie Spangler &
Robert Shulman
Rani Spudich
Karen Stephens
Kathleen & David Summerlin
Leslie Summers
Brenda & Anthony Suraci
Jeffrey Suraci
Frances Swietlicki
Teamsters Local Union No. 404
Myrna Thompson
Lynne Tirrell & Timothy Sperry
Linda & Lee Titus
Tracy & Ron Tomaselli
Joyce & Ron Tracey
Patty Turner & Thomas Jensen
Amelia Tuttle
Janie Umbricht
Judith & Stephen Vance
Mary Von Herrmann &
David Funkhouser
Karen Voos
Carelton Voos
Anne & Kevin Waehner
Linda Waldman &
Howard Sommer
David Wendt
Ulrika & John Wettlaufer
Cynthia Willner
Carol Wright
Jennifer You
John Young
Alyson & Jeff Zeitlin
Yuancheng Zhou

UP TO \$99

Barbara & Roger Adams
Allison Adekanye
Deborah & James Allegretti
Sarah Allegrini
Sara Anastasio
Donita & James Anderson-Osga
Jodi & Todd Arnold
Torrie Atwater
Linda Balestracci
Betsy & Thomas Barker

Misty Bianchi
Jane & Gene Bishop
Michael Bizzario
Elise & Mark Bohner
Holly & John Bollier
Mary Lou & Fred Bonito
Karen Bonitz
Susan & Lawrence Bonora
Kristen Braun
Traci & Kevin Brinkman
Erin Brooks
Linda Brouard
H. Benjamin Bullard
Marion Burkard
Kate Bushey
Mandie Canestri
Debra & Jay Carney
Lori & Michael Cartwright
Barbara Catlin
Judy & Gene Celone
Rebecca Chung
Janet Cizek
Eileen & David Clark
Joeline Connellan
Marie Connors
Nancy & John Cooney
Richard Cordeiro
Joann & Joseph Corlett
Kelly Cosgrove
Irina Cottrill
Ellen Cramp
Kathleen & Mark Cricchi
Amy Cripe
Joan & Richard Cuomo
Maria & Ken Cusano
Giselle & John D'Agostino
Irene & Richard D'Angelo
Cynthia & David Damer
Valeria De Azcoitia
Tammy DeFrancesco
Heather DeMaio
Lauren Dennehy
Phyllis DeRosa
Jaime Diglio
Amy Dooling
Linda Duncan
Anna Dwyer
Gloria & William Earls
Ann & Jeannette Esposito
Erin Ethier
Eleanore Fappiano
Sarah Fawcett
Rob Federici
Carolyn Fernandez
Sara Ferrucci
Sue & Timothy Flood
Ashley Frey
Eleanor Frohlich
Jeannine & Robert Frost
Bonnie Gahm
The Gallagher Family
Jessica Gallagher
Jessica Gallman
Mary Geiger & Fredrick Vogt
Marissa Gelband

Cindy Gerstl & Mark Lex
Kathy Geyer
Lucille Giaquinto
Mitch Goldblatt
Lisa Gottschalk
Andrea Granath
Barbara Graver
Sandra & David Gregory
Alexandra Gross
Guilford Racquet & Swim Club
Samuel Hahn
Judy & Peter Haley
Diane Hall
Jessica Hansen
Carmela & Robert Harris
Carrie Healy
Heather Heidtman
Lindsay Hendrix
Ian Hentall
Merideth Hentschel
Kristen Hershman
Stephen Hooker
Marcella Hourihane & Paul Hughes
Laura Jackman
Marcia & Robert Jacoby
Rebecca Johnson
Jutta Joormann
Janet Kazdan
James Kenefick
Laureen Kennedy
Jennifer Kilkelly
Leslie & Harlan Krumholz
Anne Latour
KB Lenz
Susan & Tony Leonard
Mark Lewis
Marc Lichtenfeld
Teri & Bruce Linkov
Carol & Ralph Linsley
Tina Lisien
Sarah Lockwood
Marilyn Loo
Carmen Lopez
Michael Ludwin
Caixia Lv
Monica & William Lynders
Spencer MacKenzie
Alicia Mahon
Peggy Maier & Joseph Dagrosa
Lisa Manfredonia
Judith & Allan Martin
Marybeth Marx
Kathleen & Peter Marzano
Donna Matri
Diana Mastromarino
Minerva Mayer Goyenechea
Janet & Charlie McClure
Carrie McGowan & Bob Bailey
Courtney McGowan
Bonnie McHale &
Jonathan Silbert
Kris Mercuri
Edythe Meronek
Denise Meyer
Alisha Milardo

Carolyn Milazzo &
Stephen Murphy
Irene Millet
Kelly Minott
Pamela & Putnam Morgan
Matthew Mougalian
Debra & John Muro
Simona Nerney
Xianxi Ning
Adrienne Nugent
Rita & Morgan O'Brien
Leah O'Connell
Jennifer O'Hara
Margaret & Erin O'Hara
Gail & Eugene O'Leary
Patricia & James OBrien
Jake ODonnell
Karen Onofrio Kyle
Pamela Orton
Outdoor Design, LLC
Camilla & Charles Palmer
Amy Palmer
Eduardo Palmieri
Deborah Pan
Elizabeth Pasioka
Krupa Patel
Inge Lise Pauzano
Jackson Pender
Lori Petras
Maria & Brian Phelps
Carolyn & Russell Pierson
Robin & David Polonet
James Pommer
Jay Potter
Carolyn Pratt
Stephanie Quarato
Jody Rebhun
Rajini Reddy
Mary & Ron Repetti
Sebastian Rios
Amanda Robinson
Elizabeth & Richard Rubin
Ornella Rullo
Allison Salem
Janet & Richard Sandella
Doris & Robert Schaper
Amy Schiess
Marsha & Kenneth Schultz
Winifred & Edward Seibert
Mira Sgoutas
Pat Sholly
Jeanine Sico
Alfonzo Sirica
Amy Slawson-Fortin &
Michel Fortin
Laurie & Robert Slubowski
Shawn Smith
Susan & Walter Spigelman
Lisa & Rick Ste. Marie
Jennifer Stefanis
Patricia & Matthias Strilbyckij
Virginia Syombathy
Amelia Tarantino
Sarah & Scott Taylor
Ariel Tortora

Lynn & Harry Triebel
 Lauren Tucker
 Laura Turk
 Jane Tuttle
 Lindsey Tyler
 Carrie Tyszka
 Joan & Jim Ventrillo
 Village Chocolatiers LLC
 Alma & Russell Waldo
 Nancy Wardell
 Marie Warner
 Diane & Glenn Warr
 Renee Webb
 Lindsay Weekes
 Melissa Weimer
 Karin Wertheim
 Linda & Clint Westgard
 Karen & Rick Wies
 Leah Winner
 Gregory Wright
 Margaret & Alan Yerkes
 Brianne Yeskey
 Jocelyne Yoo
 Deborah Zito
 Rujira Zook
 Pamela Zucaro & Louis Monaco

A special thank you to these donors who funded the building renovations in honor of TGF's 50th Anniversary:

Ascend Bank
 Mary Stevens & Jock Akin
 Eileen & Andrew Eder
 Kristen & Johan Eveland
 Bob Jaeger
 David & Amy Jaffe
 Delaney & Bruce Lundberg
 Martha & Terry Maguire
 Roslyn & Jerry Meyer
 Joan & Barry Richter
 Pamela & Sandy Stoddard
 Town of Guilford

TGF is honored to have received gifts in memory of:

Larry Bee
 William Dwyer
 Howard Eldridge
 Lorri Hahn
 Harvey Martin
 H. Logan Page
 Joan Shrewsbury

YOUTH ADVISORY GROUP

Students:

Wylie Armster
 Julianne Berthelot
 Avery Bruce
 Clara Cruz
 Grace Dellaventura
 Ava Eagleson
 Scarlet Earls
 Bryna Faulkner
 Mary Gahm
 Nathaniel Greif
 Lorelai Huben
 Olivia Jackson
 Abby Li
 Rory Melvin
 Allie Michna
 Louis Monaco
 Lyra Monaco
 Sofie Polizzi
 Elizabeth Reale
 Lily Scoggin
 Pierson Shlagheck
 Emelia (Emmy) Votto
 Carolina Yoo
 Soraya Zide

Advisors:

Liza Janssen Petra
 Stephanie Little Brown
 Sandy Ruoff

We worked carefully to ensure the completeness and accuracy of this list and we apologize for any mistakes. Please contact Liza Janssen Petra at (203) 640-4049 or lpetra@guilfordfoundation.org to correct any inconsistencies.



Photo: 2025-2026 Youth Advisory Group

2025 LIST OF THE GUILFORD FOUNDATION

Charitable & Memorial Funds

- | | | | |
|------|--|------|---|
| 1975 | The Guilford Foundation General Trustees Fund | 2018 | Richard Brooks Memorial Fund for Vocational Technology |
| 1979 | Liz Jones Fund for Art | 2018 | Maureen Cyr Caruso Scholarship Fund |
| 1984 | Jane H. Berger Fund | 2018 | Fappiano Family Fund for Special Needs |
| 1984 | Stanley H. Page Fund | 2018 | Jaffe Scholarship Fund |
| 1988 | Norma & Arthur Hall Fund | 2018 | Barbara Pine Memorial Fund for the Benefit of Guilford ABC |
| 1989 | Elisabeth Adams Fund | 2018 | Kyle E. Smith Scholarship Fund |
| 1989 | Virgil & Elizabeth McDaniel Fund | 2018 | Ethan Miller Song Fund |
| 1992 | Stephen A. Looney Fund | 2018 | Alison Varian Memorial Scholarship Fund |
| 1993 | Eleanor Little Fund | 2019 | Chris & Carl Balestracci, Jr. Community Fencing Fund |
| 1994 | Elizabeth Stevens Tree Fund | 2019 | The Delaney Fund |
| 1999 | Guilford Interfaith Housing Fund | 2019 | Guilford ABC College Education Fund |
| 2003 | Stuart D. Burt Fund | 2019 | Janet Poss Women & Girls Fund |
| 2006 | Effie Good Fund | 2021 | Karen & Terry Bergantino Educational Fund |
| 2008 | Al & Gene Bishop Fund for Vocational and Industrial Arts | 2021 | Paul Dostie KARE Fund |
| 2009 | Ascend Bank Charitable Fund for Guilford | 2021 | Richard Hersh & Judith Meyers Scholarship Fund |
| 2009 | Guilford Interact Student Advisory Fund | 2021 | Amy D. Jaffe Fund for the benefit of the Emergency Discretionary Fund at WFLC |
| 2009 | Elizabeth "Lizzie" Schwanfelder Fund | 2021 | Jane Rudner Fund for the Benefit of Shoreline Village CT |
| 2009 | Lou & Susan Weady Fund | 2022 | B. Joan Hickey & Dennis F. Hickey Scholarship Fund |
| 2010 | Carl A. Balestracci, Jr. Humanitarian Fund | 2022 | Barbara Nugent Scholarship Fund |
| 2011 | Helen E. Downing Outdoor Education Fund | 2022 | Joan & Barry Richter Fund |
| 2012 | Guilford Bell Curve Charitable Fund | 2022 | James P. Scialabba Scholarship Fund |
| 2012 | Michael B. & Maryann Bracken Family Fund | 2022 | Rex Prescott Walden Fund |
| 2012 | Corky Fisher Educational Fund | 2023 | Jonathan & Nancy Bishop Fund for Musical Opportunities for Youth |
| 2012 | Saint George Knights of Columbus Fund for Children in Need | 2023 | Elizabeth "Betsy" Goodspeed Frederick Fund |
| 2012 | Gustave & Carol L. Sirot Fund | 2023 | Joe & Cindy Goldberg Family Children's Opportunity Fund |
| 2013 | Thomas M. Ginz Fund for Children | 2023 | Guilford Youth Mentoring Education Fund |
| 2013 | Bill & Kate Lee Family Fund to Support the Guilford Community Fund | 2024 | Bishop Family Fund |
| 2013 | Women & Family Life Center Agency Endowment Fund | 2024 | Natalie & Lenny Feingold and Beth Tenenbaum Family Fund |
| 2014 | Catardi Family "Loaves and Fishes" Fund | 2024 | Guilford Fund for Education (GFFE) |
| 2014 | Guilford Interfaith Volunteers Endowment Fund | 2024 | John and Merri Hyman Fund for Sustainable Operations |
| 2015 | Jared Eliot Philanthropic Fund | 2024 | Jesse E. Whittemore Jr. Scholarship Fund |
| 2015 | Jake Penman Memorial Scholarship Fund | 2025 | Geelan Family Fund |
| 2015 | Ralph Schipani Memorial Fund | 2025 | Shirley Girioni Fund |
| 2016 | Campaigne Kestner Architects Fund | 2025 | Guilford Celebration Fund |
| 2016 | Guilford Art Center Endowment Fund | 2025 | Lorri Hahn Memorial Fund |
| 2016 | Guilford Institute Fund | 2025 | Adam Reid Ives Fund for Musical Enrichment |
| 2016 | Patricia W. Jaeger Fund | 2025 | The Harvey Martin Music Scholarship Fund |
| 2016 | David W. Knapp Fund | 2025 | Chloe Negron Memorial Fund |
| 2016 | Mancini Family Fund | 2025 | Sandy Ruoff Fund |
| 2017 | APK Charities Corp Endowment Fund | 2025 | Jan Walzer and David Etzel Fund |
| 2017 | Joe & Nancy Arnold Fund to support the Guilford ABC Program | | |
| 2017 | The Children's Fund | | |
| 2017 | Grass Island Fund | | |
| 2017 | Guilford Keeping Society Endowment Fund | | |
| 2017 | Gunn-Marshall Performing Arts Diversity Fund | | |
| 2017 | Livia Jacobs Seashore Fund | | |
| 2018 | Robert Blake Memorial Fund for the Benefit of Guilford ABC | | |

Photo: Baldwin Middle School students
enjoy their new playground.



— THE —
GUILFORD
FOUNDATION

PO BOX 35 | GUILFORD, CT 06437 | (203) 640-4049 | GUILFORDFOUNDATION.ORG